



Friday Update

8th May 2026



Attendance 95.1%

Dear Milford Families

From morning Wake and Shakes, to afternoon yoga and all sorts of fun in-between, we've had a brilliant 'Feeling Good Week'. Ending today with a riot of colour and out of the norm outfits for Break the Rules Day. Please remember to remove any tattoos, nail varnish, coloured hair spray etc before school on Monday.

Thank you to everyone who joined us on Wednesday for the Binca Sewing Session. All of the designs will be up for you to see at our Summer Exhibition on 9th July.

We hope you have a wonderful weekend.

Much love, the Milford Team

Sun cream & hats

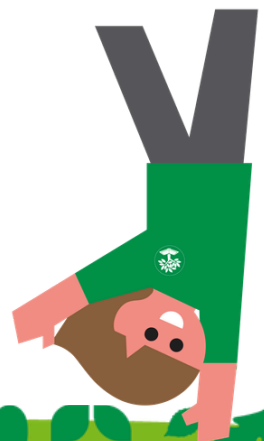


On sunny days, please put sun cream on your children before school. They can also bring in a named bottle to put in their book bag but must be able to apply it themselves. We ask that children **don't share sunscreen** with their friends due to allergies.

We also encourage you to bring in a named sun hat for your child.



Everyone to **grow**, **learn**, **believe**, **achieve**



Term diary dates 2026

May

- 15 Year 2 Woodland School
- 18-21 Science Week *and*
- 18 Science Week Invention Competition home in book bags *and*
- 18 Year 2 to Marwell Zoo *and*
- 18 Clubs for the second half of the summer term open for bookings
- 22 Inset Day 5
- 25-29 Half-term

June

- 4 Rainbow / colour themed non-uniform day (with rainbow hamper donation for the Summer Fair)
- 5 Year R to Woodland School *and*
Year 1 and 2 Olympic Games at Rodborough School
- 10 Sports Day (9-11am parents welcome)
- 12 Cherry Woodland School
- 15 Funky Sock Day (bottle tombola & sweet donations for the Summer Fair)
- 17 Reserve Sports Day
- 19 Beech Woodland School *and*
Milford Summer Fair (4.30-6.30pm) - Colour Festival and Colour Run!
- 23 Year R Class Assembly (9-9.30am, parents welcome)
- 24 Perform Drama Workshop 'Peter Pan's Adventure' (whole school)
- 26 Year 2 Woodland School
- 30 Cherry Class Assembly (9-9.30am, parents welcome) *and*
Year 2 Bump Up Day to Chandler School

July

- 1 Year 2 Bump Up Day to Chandler School
- 2 Bake Sale after school (run by Reception Year)
- 7 Beech Class Assembly (9-9.30am, parents welcome)
- 8 Year 1 to Hayling Island
- 9 Summer Exhibition (parents welcome, 2.30-3.30pm)
- 10 Year R to Tuesley Farm
- 13 Rocksteady Concert (for parents of children going to Rocksteady Club)
- 15 Year 2 Play (9am parents welcome)
- 20 Year 2 Leavers Party
- 21 Year 2 to Henley Fort
- 22 Last day of term, 1pm pick up

Events in green are organised by The Friends of Milford School



MAY HALF TERM

at Haslemere Museum

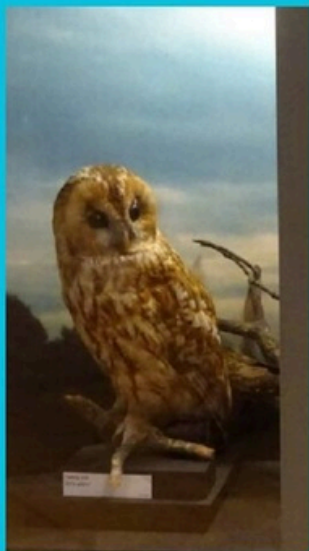


Museum explorers
ages 5-11

Pond Dipping

Tuesday
26 May
10.30am-12pm

Investigate what lives below the surface of the Museum's pond, then see them under a digital microscope



Special opening
for SEND/ASC
Early Birds

Wednesday
27 May
9-10am

Come along and enjoy the Museum free from the hustle and bustle of the general public



Family activity
Get Creative

Thursday
28 May
10.30am-1pm

Explore different media to let your creativity flow and make your own creative masterpieces



Family activity
LEGO Drop-in

Friday
29 May
10.30-12.30pm

Come along and search through our Lego and let your imagination run wild

FIND OUT MORE & BOOK AT
haslemeremuseum.co.uk/whatson

